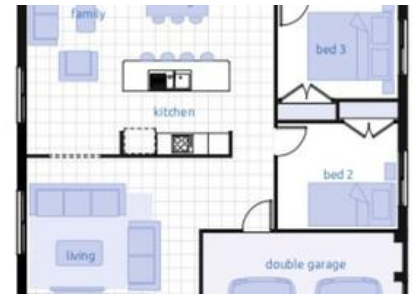
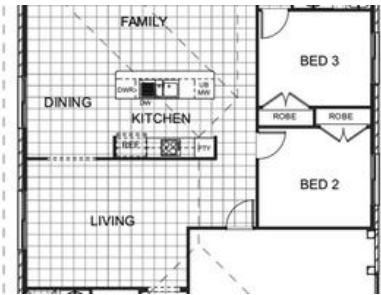




Gillieston Heights

Living	167.3 m ²
Garage	34.4 m ²
Patio	4.4 m ²
Total	206.1 m²



Gillieston Heights - Gillieston Grove

Nestled in the hill country above Maitland, the heart of the Hunter Valley, located only minutes from Maitland CBD and 20 minutes north of Newcastle (via the Hunter Expressway), Gillieston Heights offers an ideal investment location.

Surrounded by high growth employment corridors, Gillieston Heights has a growing population eager to live within a convenient commute to work places and vital infrastructure such as new schools, shopping and transportation.

Connected to bus and rail services and within minutes of the Hunter expressway, Gillieston Grove presents a perfect opportunity for growing families and investment portfolios alike.

Examples of packages include:

Lot 421 - 520sqm, 4 Bed, 2 Bath, 2 Car \$502,000

Lot 417 - 520sqm, 4 Bed, 2 Bath, 2 Car \$502,000

Lot 401 - 520sqm, 4 Bed, 2 Bath, 2 Car \$502,000

For further information please contact Robert or Raymond Rees 49621292

4 2 2

Price Price On Application
Property Type residential
Property ID 368

Agent Details

Raymond Rees - 0409571776

Office Details

ISLINGTON
 69 Maitland Road Islington NSW 2296
 Australia
 02 4962 1292



The above information provided has been furnished to us by the vendor/s. We have not verified whether or not that information is accurate and do not have any belief in one way or the other in its accuracy. We do not accept any responsibility to any person for its accuracy and do no more than pass it on. All interested parties should make and rely upon their own inquiries in order to determine whether or not this information is in fact accurate.