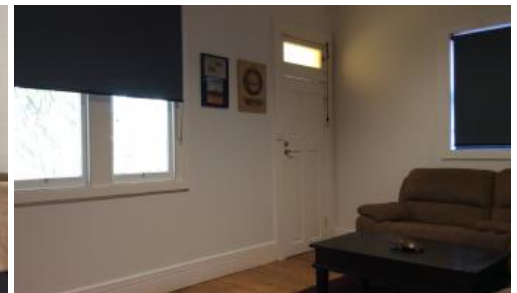




23 Elizabeth St, Tighes Hill



TIGHES HILL- POTENTIAL INVESTMENT APPROX \$650.00 PER WEEK RENTAL RETURN

2 2 1

The price has been reduced.

With pleasing Street appeal and an elevated North aspect, this double brick home retains its original timber facade yet has been purposely re-built with the remainder of the property being just 10yrs young.

Seize the chance to secure one of Tighes Hill's beaut brick bungalows now being offered to market.

This certainly makes for a great apartment alternative.

Comprises: Baltic pine and tiled flooring throughout, high ceilings, formal and informal living spaces, double bedroom with air and built-ins, centrally positioned generous and modern tiled bath, galley style kitchen with an abundance of drawer and cupboard space, stainless appliances and more. Glass sliding doors off the informal living opens out onto a private and secluded separate guest or teen quarters with own bathroom facilities.

Drive access is offered and a lock up brick garage. Come see what works for you and yours!

The home is complete with Solar!

Ideally would suit a couple who wish to take full advantage of this great area with it many lifestyle attractions or equally the prudent investor to maximise 2 separate rental incomes.

Capture those cooling North East breezes from this elevated Elizabeth Street location.

For our inspection schedule please phone Raymond Rees - 0409 571 776

Price SOLD
Property Type Residential
Property ID 376

Agent Details

Raymond Rees - 02 49 621 292

Office Details

ISLINGTON
69 Maitland Road Islington NSW 2296
Australia
02 4962 1292



The above information provided has been furnished to us by the vendor/s. We have not verified whether or not that information is accurate and do not have any belief in one way or the other in its accuracy. We do not accept any responsibility to any person for its accuracy and do no more than pass it on. All interested parties should make and rely upon their own inquiries in order to determine whether or not this information is in fact accurate.